

Living Wall

Kaleidoscope of enthusiasm

Bathroom designers need conceptual solutions that make it easier to plan such individually created bathrooms. We take our cue from this need. Seeing it as our task to create a software, which is easy, variabel and fast in the application and which at the same time solves all of the technical interface requirements.

A process that has become increasingly significant and dynamic over recent years.

With the simple and quick handling of ViSoft Premium and LivingWall you get a complete system for exhibition and sales professionals. Take advantage of this fast and efficient way of computer sales advice. Present many different pattern panels and make your own decision, which tiles you want to show in the virtual pattern wall board.

Expansion of output devices

The support of the LivingWall module allows the planning in 2D and concurrently the result in 3D. Just connect the second graphic card slot with your selected output medium > Ready. Your customer can directly observe the handling and enjoy the fantastic quality result.

Wall board presentation

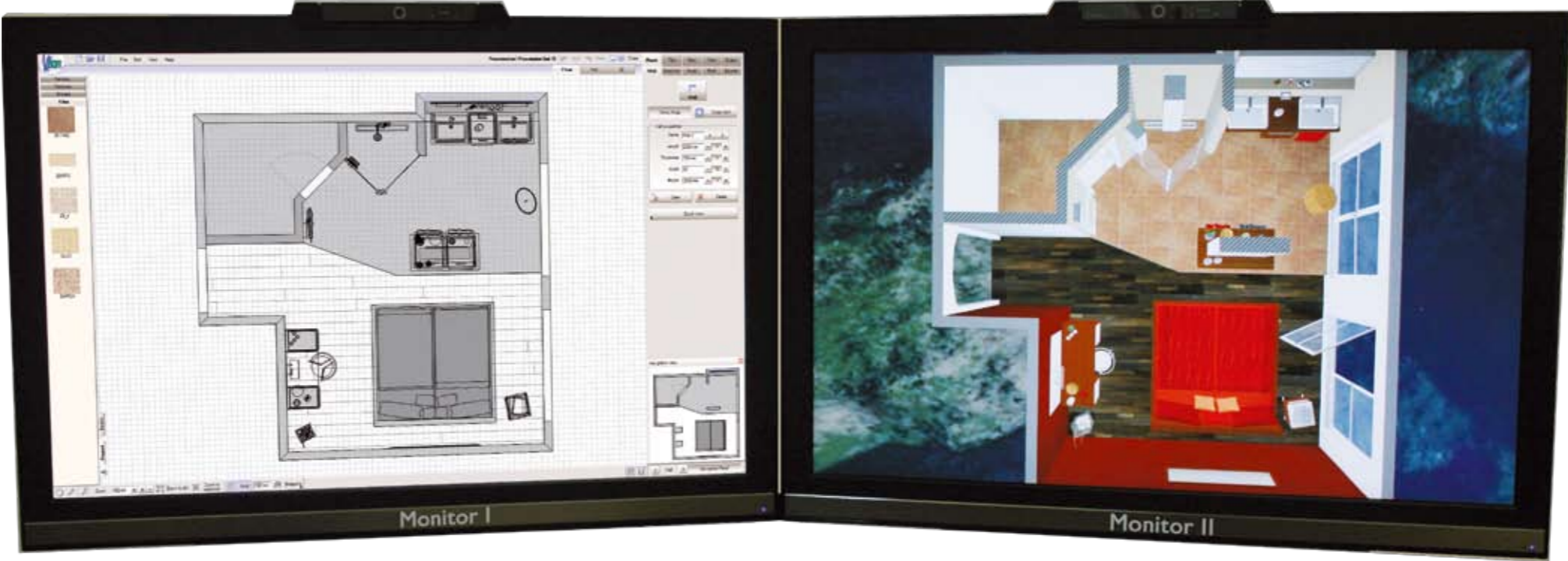
The LivingWall software modul is another presentation medium. The wall boards can switch automatically.

History of variants

You can follow the history of variants on the second output. For a great consultation with the customer.

Virtual pattern panels

You can create your own presentation of virtual pattern panels. Fast deal with a customer.



2nd Screen or TV

The view of the whole ensemble reflects the diversity of options.

ViSoft Living Wall is a software module for ViSoft Premium and offers many possibilities to show customer a totally unique space presentation on digital output devices. The support of the Living Wall module allows the planning in 2D and concurrently the result in 3D. You select the nature of your output medium. Play with these options and make the room experience. ViSoft Living Wall.



Kaleidoscope

The automatic sequence of different tiling and laying.

Camera flights

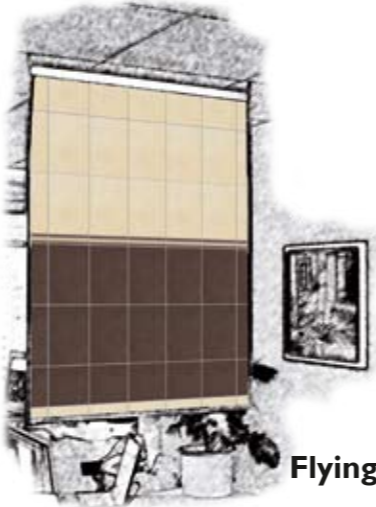
You are the director! Show the customer the room with a perfect animation, fast and easy!

Emotion in original size

With an impressive and life-size projection by using a projector or back panel projection allows your customer to show his personal bathroom in scale 1:1.



Projector



Flying Screen

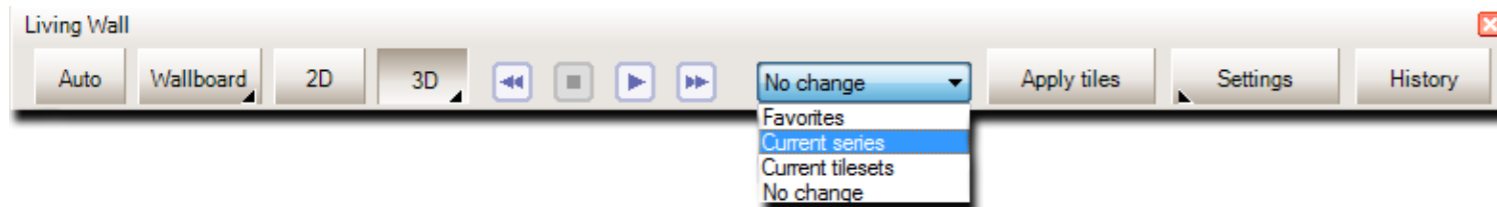


Back panel projection

The emotional all-in system

Living Wall control bar

All Living Wall functions on one control bar! It allows fast switching between different display modes, control of tile presentation and the possibility to show the wall board variants in kaleidoscope view.



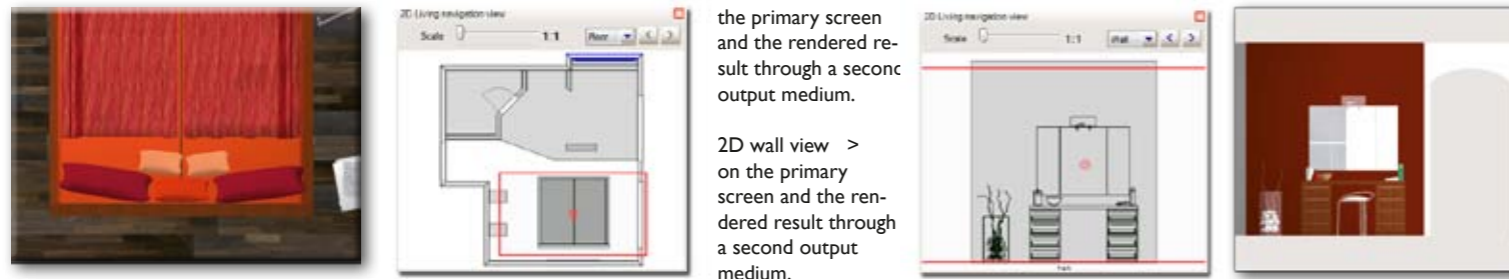
Display modes Living Wall

The Living Wall tool bar offers different ways of presentation. Press one of the following buttons to switch.

Auto The automatic display mode presents, depending on the chosen functional area and the selected view in ViSoft Premium, all views concurrent on the Living Wall. The customer will see only relevant contents on the Living Wall.

Wallboard The button wallboard gives you the opportunity to show your individual wallboards on the Living Wall. Create wall board with high emotion for the customer.

2D With the 2D button you are able to activate the wall and floor display on the Living Wall.



< 2D floor view on the primary screen and the rendered result through a second output medium.

2D wall view > on the primary screen and the rendered result through a second output medium.

3D By pressing this button you switch to present perspective of 3D view on the Living Wall. You can show tiles and sanitary depending on your output medium in 1:1 original size. The customer can experience his virtual space during the planning phase.



Kaleidoscope of enthusiasm



This software module for ViSoft Premium offers many possibilities to show customer a totally unique presentation on digital output devices.

Function of Living Wall module for ViSoft Premium

- Emotion in original size (1:1)
- Individual choice of a second output device (Monitor, Projector, TV, Flying Screen or back panel projection)
- Automatic representation of laying procedure with different colors for wall panels or 3D spaces
- Automatic presentation of pattern wall boards
- Automatic animated camera flights
- Impressive and individual customer consulting with the wall board assistant
- Presentation of new, self-designed pattern boards



ViSoft GmbH
Engineering company for visual concepts
Mercedesstr. 1
D - 71063 Sindelfingen

Phone: + 49 (0) 7031 / 81 50 20
Fax: + 49 (0) 7031 / 81 50 22

E-Mail: info@visoft.de
Web: www.visoft.de

System requirements 09/2009

Computer and Processor	Intel Core 2 Duo (E7300, equal to 2 * 2,66 GHz) DVD Drive
System Memory (RAM):	2048 MB (recommended 4096 MB)
Harddisk (HDD):	min 250 GB (min 7200 rpm) program-installation 0,65 GB, data approx. 15 GB*
Operating System:	Microsoft Windows XP SP3 or Windows Vista (all versions) or Microsoft Windows 7
Graphics Adapter:	NVIDIA GeForce GTX 260 with 512 MB RAM (PCI Express)
	Recommended graphic adapters NVIDIA: NVIDIA GeForce GTX 275/285/295 NVIDIA GeForce 9800 GT
	Recommended graphic adapters ATI: ATI Radeon HD 4850 ATI Radeon HD 4870 ATI Radeon HD 4890
Monitor/Screen:	resolution min. 1280x1024 (True Color, 32 Bit) / Full HD recommendation

*depending on the selected manufacturer data

Perfect. Easy. Fast.